

Trailer sheet

Serial #_F0073__

Retail _19,940.00__

Our price _17,995.00__

Model#_J14HW__

Year _08__

Axle (1) 4550 #

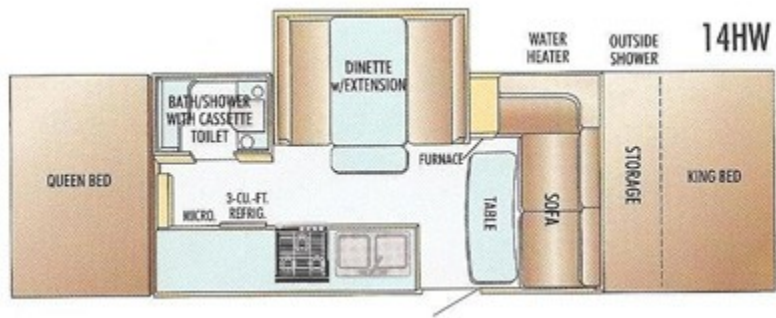
Ramp NO

Color _BLUE& WHITE__

Size _12'__

Gvw 4550 dry wt. _3205 hauling cap._1345__





Customer Value Package

AM/FM/CD stereo w/ iPod® adapter; Polished aluminum rims; Self-storing awning made by Jayco®; Water purification system

Deluxe screen room

Exterior storage drawer (12 HW)

POWER Roof vent

CSA Standards

Standard Interior Equipment

12V high-intensity lighting

Automatic cut-off switch for interior lights

Bar for hanging clothes

Bed flaps that cover edge of bed

Powder-coated white bunk end bows with adjustable tension tent supports

Cable TV hookup with RG6 connection

Tinted vinyl windows

110V G.F.C.I. protected interior receptacle

Door pulls with roller catch

Drawers are made of real wood with nylon guides

Bunk end fan lights (2)

Floor-level courtesy lights

Coordinated furniture, designed and made by Jayco®

Hinged dinette seat bases

Mildew resistant aluminum ceiling

Non-sliding, 4" deep cushions for dinette with reversible EZ-clean™ vinyl backs

Prep for A/C accommodating all roof-mounted A/C's

Privacy curtains for end-bunks

SoftShade™ window shades and valances

Vinyl flooring wall to wall

Manchester Oak raised panel cabinetry

Booth dinette

Brushed nickel hardware

C-clamp connection on tent supports

Granite-look countertop

Modern interior designed and made by Jayco®

Table extension

Hardwall bath/shower with cassette toilet (14 HW)

Cup holders installed throughout

Heavy-duty entrance door securement latches

Standard Kitchen Equipment

3-cu.ft. 3-way gas/electric refrigerator (110V/12V/Propane)

6-gal. water heater

Appliances are pre-plumbed for propane

Carry-out dinette table

Fluorescent light above sink

Spice rack

Tray for silverware

Stainless steel double bowl sink and faucet

Dometic 2-burner stove/oven with recessed stove ring (14 HW)

Microwave oven

Oversized oven

Recessed 3-burner range with hinged cover (12 HW)

Standard Exterior Equipment

15" D-range tires (14 HW)

14" D-range tires (12 HW)

14" x 14" roof vent

110V G.F.C.I. protected exterior receptacle

Bumper made with welded steel construction (12 HW)

DURATEK™ water-repellent sectionalized tent

Crank-down stabilizer jacks with sand pads

Diamond-plate walls on front and rear (12 HW)

Domed, fiberglass roof with no center seam

E-Coat™ protected frame

Electric brakes (select models)

Entrance door access with roof lowered

Entrance door is 1-piece construction

Extrusions for box top are painted (powder-coated) white with white corner caps

E-Z Lube® axles

Floor is undercoated and constructed of edge-sealed Structurwood™

Jayco's original, fully enclosed lifter system (same design used since 1968)

Leveling jacks and heavy-duty A-frame construction

Lifter post covers integrated into tent

Light in front trunk

One-piece high-density polyethylene wheel wells

Outside shower

Prep wiring for battery

Scratch resistant, embossed aluminum finish on exterior (12 HW)

Self-storing step

Spare tire and tire carrier

Storage compartment in front trunk

Tent attachment velcros around entrance door

Vinyl, spare tire cover

Wide-body construction

Entrance door caddy

Double aluminum exterior sidewalls (12 HW)

Exterior entrance door storage with securement strap

Rounded wheel wells

Self-storing screen door

TorFlex® independent torsion axle suspension

Front ABS cap (14 HW)

Rear ABS cap with molded automotive styling (14 HW)

Lamilux 4000 fiberglass laminated sidewalls (14 HW)

Bumper is welded tube powder coated white (14 HW)

Bed bases are undercoated

Standard Heat, Power and Water

Double 20-lb. gas bottles, with vinyl cover

Hookup for city water

12V electrical system with 30-amp. 110V converter

17 gal. fresh water system with 12V demand pump

30ft 30amp power cord

16,000 BTU Furnace

Water heater bypass system

Standard Safety Equipment

Breakaway switch

Dual hitch safety chains

Fire extinguisher

Propane alarm

Carbon monoxide alarm